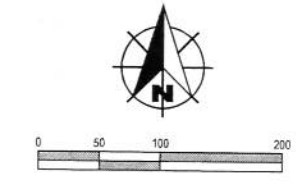
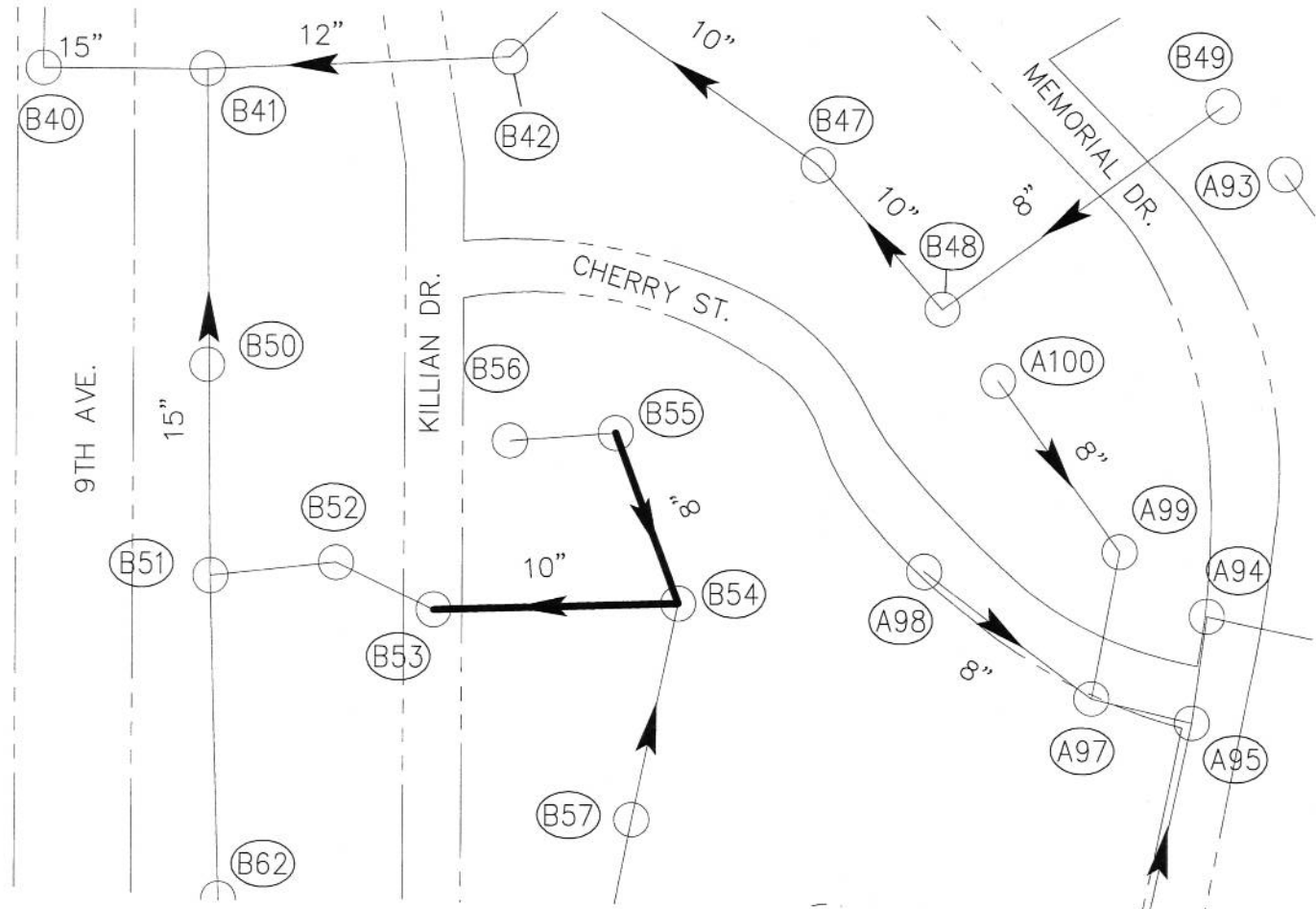


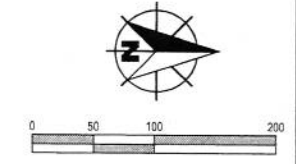
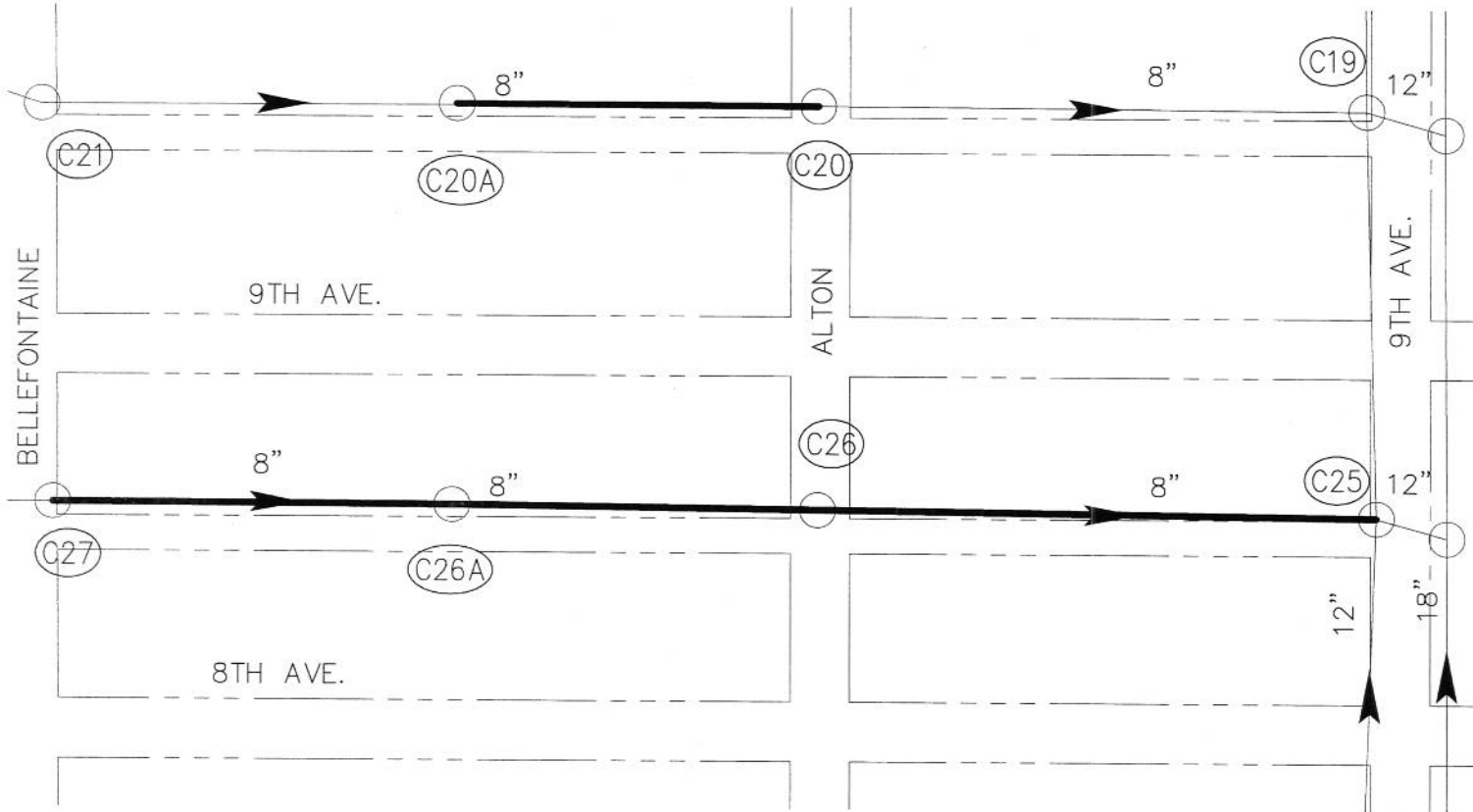
Drawing: J:\Beech Grove\Projects\124909 Beech Grove OnCall Sanitary\Sanitary Rehab\_CADD\CAD 04-001\DWG\Exhibit\124909-EXH.dwg Last Saved By: Jason Walker



**LEGEND**  
— 2015 PROPOSED CIPP LINING



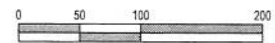
**FIGURE 1**  
**CIPP LINING**  
B55 TO B54  
B54 TO B53  
BEECH GROVE, INDIANA  
MAY 2015



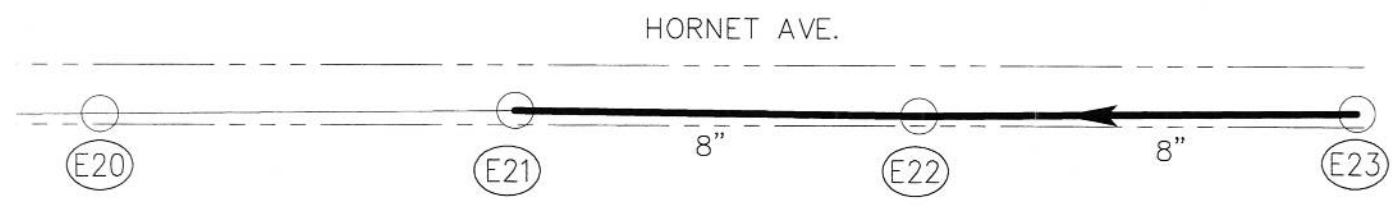
**LEGEND**  
— 2015 PROPOSED CIPP LINING

**FIGURE 2**  
**CIPP LINING**  
C27 TO C26  
C26 TO C25  
C20A TO C20  
BEECH GROVE, INDIANA  
MAY 2015

Drawing: J:\Beech Grove\Projects\124909 Beech Grove OnCall Sanitary\Sanitary Rehab\_CADD\CAD 04-001\DWG\Exhibit\124909-EX1.dwg Last Saved By: Jason Walker

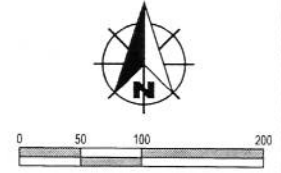
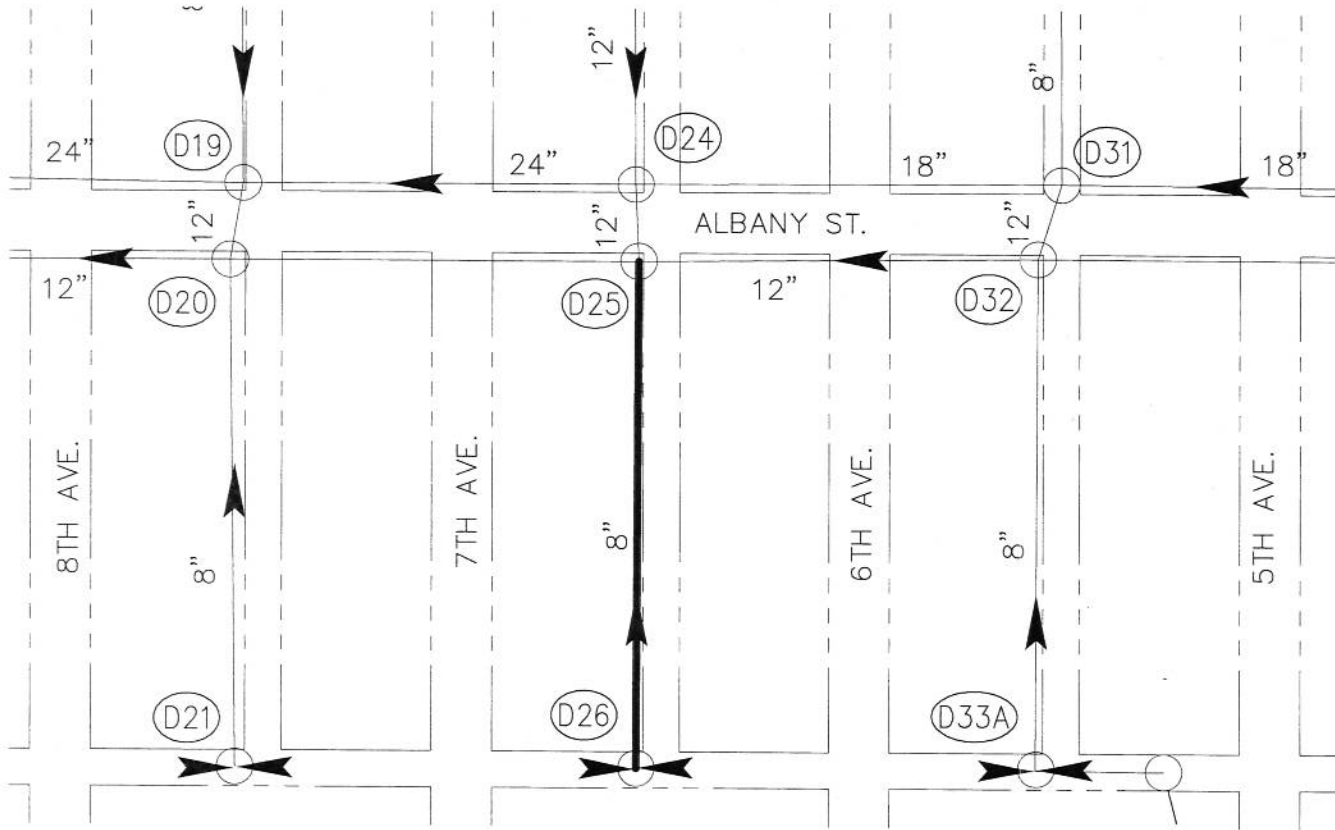


**LEGEND**  
— 2015 PROPOSED CIPP LINING




**FIGURE 3**  
**CIPP LINING**  
E23 TO E22  
E22 TO E21  
BEECH GROVE, INDIANA  
MAY 2015

Drawing: J:\Beech Grove\Projects\124909 Beech Grove OnCall Sanitary\Sanitary\_Rehab\_CADD\CAD 04-001\DWG\EXHIBIT\124909-EXH.dwg Last Saved By: Jason Walker



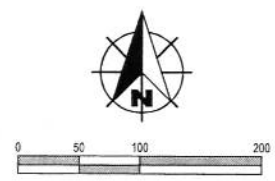
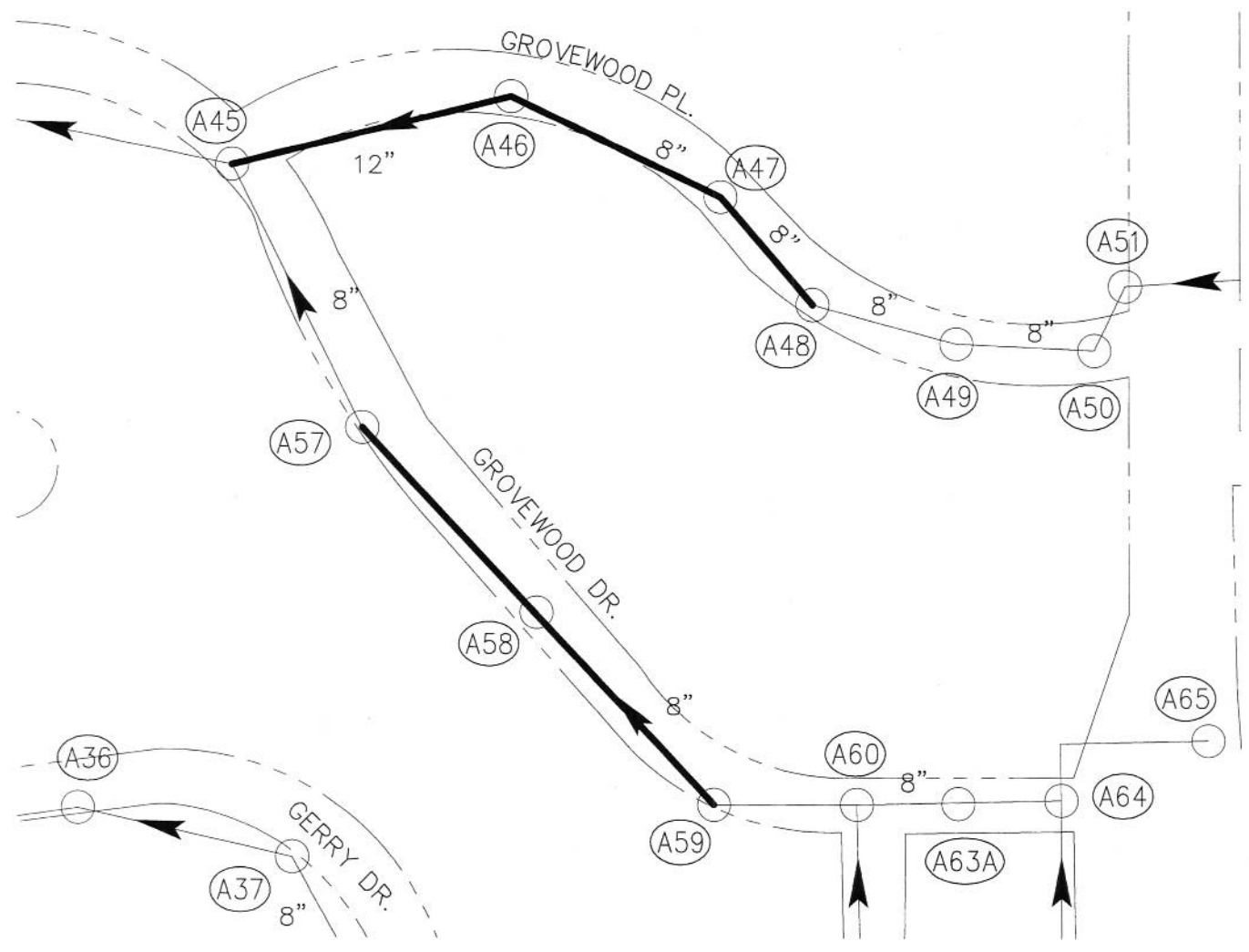
**LEGEND**

 2015 PROPOSED CIPP LINING



**FIGURE 4**  
**CIPP LINING**  
D26 TO D25  
BEECH GROVE, INDIANA  
MAY 2015

Drawing: J:\Beech Grove\Projects\124909 Beech Grove OnCall Sanitary\Sanitary Rehab\_CADD\CAD\_04-001\DWG\Exhibit\124909-EX1.dwg Last Saved By: Jason Walker



**LEGEND**  
— 2015 PROPOSED CIPP LINING

**FIGURE 5**  
**CIPP LINING**  
A59 TO A58  
A58 TO A57  
A48 TO A47  
A47 TO A46  
A46 TO A45  
BEECH GROVE, INDIANA  
MAY 2015

**Pre-Design Construction Cost Estimate  
 CIPP Lining of Sanitary Sewers**

**Base Quote: Segments: B55-B54; B54-B53; C27-C26; E22-E21; E23-E22; C20A-C20; D26-D25; A58-A57  
 A59-A58; A47-A46; A48-A47**

Item	Description	Quantity	Unit	Unit Price	Total Price
1	8-inch CIPP Lining	3,652	LF	\$ 31	\$ 113,212
2	10-inch CIPP Lining	230	LF	\$ 35	\$ 8,050
3	Lateral Reinstatement	100	EA	\$ 150	\$ 15,000
4	Protruding Lateral Removal	11	EA	\$ 300	\$ 3,300
<b>Total</b>					<b>\$ 139,600</b>

**Add Alternate 1: Add Segment: A46-A45**

Item	Description	Quantity	Unit	Unit Price	Total Price
1	12-inch CIPP Lining	237	LF	\$ 45	\$ 10,665
2	Lateral Reinstatement	2	EA	\$ 150	\$ 300
3	Protruding Lateral Removal	1	EA	\$ 300	\$ 300
<b>Total</b>					<b>\$ 11,300</b>